

Day One
Wednesday July 19, 2017

08.00 Registration & Coffee

09.00 Chair's Opening Remarks - Room: Huntington I/II
Barbara Joyce-Shaikh, Associate Principal Scientist, Immunoncology, Merck Research Laboratories

Taking Learnings from the Clinic to Advance Preclinical Models & Translational Decision Making

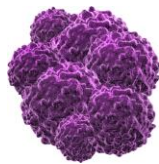
09.10 Developing Checkpoint Target Humanized Models For Preclinical Efficacy Assessment
Davy (Xuesong) Ouyang, Senior Director of Translational Oncology , Crown Bioscience

09.40 Patient Derived Xenografts: a platform for Personalized Care of Pancreatic Cancer
Jason Fleming, Chairman of Gastrointestinal Oncology, Moffitt Cancer Center

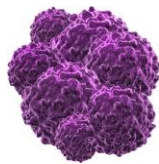
10.10 Patient-Derived Tumor Xenografts in Humanized NSG-SGM3 Mice: A New Immuno-Oncology Platform
Rick Huntress, Director of Business Development, Clinical & In Vivo Services, The Jackson Laboratory

10.40 Speed Networking Session

11.10 Morning Refreshments



<p style="text-align: center;">TRACK A: Advancing the Characterization of Preclinical Models</p> <p>Chair: Leigh Ellis, Assistant Professor of Pathology, Department of Oncologic Pathology, Dana-Farber Cancer Institute</p> <p style="text-align: center;">Room: Braemore/Kenmore</p>	<p style="text-align: center;">TRACK B: Optimizing Model Development for Immunotherapies</p> <p>Chair: Christopher Murriel, Senior Scientist II, OncoMed Pharmaceuticals</p> <p style="text-align: center;">Room: Huntington I/II</p>
<p>In Vivo Model Advancements: Syngeneic Models</p>	<p>Enhancing the Use of Humanized Mice Models in Preclinical Studies</p>
<p>11.40 Identification of Novel Immune Regulators of Tumor Growth Using High-Throughput Screening In Vivo Tom Brennan, Vice President, Pharmacology & Bioanalytics, FivePrime Therapeutics</p> <p>12.10 Preclinical Mouse Models of Cancer Via Transposon- Mediated Mutagenesis or Gene Transfer David Largaespada, American Cancer Society Research Professor, Department of Pediatrics, Masonic Cancer Center, University of Minnesota</p>	<p>11.40 Addressing the Latest Advancements in the Development of Routine Humanized Mice for Immunotherapies Nicole Walsh, Post-doctoral Associate, Molecular Medicine, University of Massachusetts Medical School</p> <p>12.10 Humanized Mouse Models for Drug Discovery Research Barbara Joyce-Shaikh, Associate Principal Scientist, Immunoncology, Merck Research Laboratories</p> <p>12.40 Focal Radiation in Combination with Chemotherapy & Immunotherapy Maryland Franklin, Vice President, Scientific Development, MI Bioresearch</p> <p><i>This session will finish at 12.55</i></p>
<p>12.40 Networking Lunch</p>	
<p>In Vivo Model Advancements: PDX Models</p>	<p>Harnessing Ex Vivo Assays for the Development of Cell Therapies</p>
<p>14.00 The Use of PDX Models to Support Oncology Drug Development Edward Rosfjord, Senior Principal Scientist, Pfizer</p>	<p>14.00 Developing Ex Vivo Preclinical Models to Enhance Translation from In Vitro to In Vivo for Cell Therapies Gregor Adams, Principal Scientist, Kite Pharma</p>
<p>14.30 Highly Characterized Patient-Derived Xenograft Collections for Preclinical Studies Jochen Hartner, Scientific Liaison; Field Application Leader, Horizon Discovery</p>	<p>14.30 Preclinical Modeling of Chimeric Antigen Receptor T Cell Therapy and Combination Immunotherapy Saad Kenderian, Assistant Professor of Medicine & Oncology, Mayo Clinic</p>



15.00 Vascular Phenotyping in PDX Models Using Multimodal Imaging

Mukund Seshadri, Professor of Oncology, Departments of Pharmacology & Therapeutics, Oral Medicine/Head & Neck Surgery, Roswell Park Cancer Institute- In collaboration with Fujifilm Visualsonics

This session will finish at 15.15

15.00 Exploring Tumor Microenvironment Using Immuno-PET as a Predictive Tool

Mohammad Rashidian, Research Fellow, Boston Children Hospital, Harvard Medical School

15.30 Afternoon Refreshments & Poster Session

16.10 Tumor Models Interactive Roundtable Discussions

In this 1 hour session, you will have the opportunity to catch up on the latest advancements within the field and learn from your fellow colleagues in this interactive format. The topics that will be discussed are the following:

Room: Huntington I/II

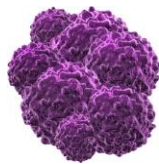
1. Developing predictive humanized mice models for cancer immunotherapies
2. What benefits can organoid cultures bring to preclinical studies?

Room: Braemore/Kenmore

3. Fundamental preclinical experimental design: Setting up for clinical success
4. Using preclinical models to optimize the predictability of novel combination therapies

17.10 Close of Day 1

17.15 Networking Drinks Reception- Hosted By Crown Bioscience



Day Two
Thursday July 20, 2017

08.00 Networking & Coffee

09.00 Chair’s Opening Remarks - Room: Huntington I/II
 Barbara Joyce-Shaikh, Associate Principal Scientist, Immunoncology, Merck Research Laboratories

Clinical Findings & Experimental Platforms to Identify Effective IO Combinations

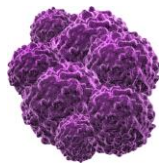
09.10 Advanced PDX Tumor Biology Platforms for Drug Advancement
 Neal Goodwin, VP, Corporate Research Development, Champions Oncology

09.40 Evaluating Preclinical Predictions for the Development of Combinations with Targeted Therapies & Immunotherapies
 Andrew Rhim, CPRIT Scholar in Cancer Research, Associate Director for Translational Research in Pancreatic Cancer Research, Assistant Professor of Internal Medicine in , Gastroenterology, Hepatology & Nutrition, MD Anderson Cancer Center

10.10 A Novel Phenotypic Platform for Predicting Tumor Response
 Mark Paris, Associate Director, Translational Applications, Mitra Biotech

10.40 Networking & Morning Refreshments

TRACK A: Advancing Translational Progression of Targeted Therapies Chair: Leigh Ellis, Assistant Professor of Pathology, Department of Oncologic Pathology, Dana-Farber Cancer Institute Room: Braemore/Kenmore	TRACK B: Advancing Translational Progression of Immunotherapies Chair: Edward Rosfjord, Senior Principal Scientist, Pfizer Room: Huntington I/II
11.10 Reverse Translation: Evaluating the Predictability of Preclinical Models Through Correlation Analysis of Clinical Data for Targeted Therapies Christopher Murriel, Senior Scientist II, OncoMed Pharmaceuticals	11.10 Highlighting Clinical Outcomes of CAR-T Therapies to Enhance Translational Insights from Preclinical Models David Teachey, Associate Professor of Pediatrics, Divisions of Hematology & Oncology, Children’s Hospital of Philadelphia, University of Pennsylvania School of Medicine
11.40 Modeling Development of a Gene Expression Signatures of Response & Resistance to Proteasome Inhibitors Brian Van Ness, Professor, Department of Genetics, Cell Biology & Development, College of Biological Sciences, University of Minnesota Cancer Center	11.40 BPM 31510, A Clinical Stage Candidate, Demonstrates Potent Anti-Tumor Effect by Modulating Metabolism of Immune Cells Shiva Kazerounian, Senior Scientist, Berg Pharma



<p>12.10 Addressing the Woodchuck Model for Hepatitis B Related HCC Renuka Iyer, Section Chief GI Medical Oncology, Roswell Park Cancer Institute</p>	<p>12.10 Comparative Oncology to Inform Clinical Translation of Immunotherapies Shruthi Naik, Research Associate, Department of Molecular Medicine, Mayo Clinic</p>
<p>12.40 Networking lunch</p>	
<p>Addressing Preclinical Model Advancements: Optimizing In Vitro Models</p>	<p>Clinical Learnings from Immunotherapies to Drive Preclinical Predictions</p>
<p>13.40 Advances in In Vitro Model Development for Oncology Drug Discovery Serena Silver, Senior Investigator, Group Leader, Oncology, Novartis Institutes for Biomedical Research</p>	<p>13.40 Harnessing Humanized Mice to Improve Preclinical Predictions for Immuno Therapy and Nano Technology Approaches to Treat Cancers Vinagolu Rajasekhar, Senior Research Scientist, Memorial Sloan Kettering Cancer Center</p>
<p>14.10 Accelerating Prediction of Tumor Vulnerabilities Using Next-Generation Cancer Models Moony Tseng, Research Scientist II, Cancer Cell Line Factory Project Lead, Broad Institute</p>	<p>14.10 Influence of Microenvironment in Primary & Bone Tumor Breast Cancer Models Jenni Bernoulli, COO, Pharmatest Services</p>
<p>14.40 Modeling Tumor Microenvironment using Microfluidic Systems Ran Li, Postdoctoral Scientist, Roger Kamm's Lab, Department of Biological Engineering & Mechanical Engineering, MIT</p>	<p>14.25 Biological Advances to Help Navigate the Nonclinical Safety Assessment Strategy in Cancer Immunotherapy Robert Li, Toxicologist, Pharmacology SubTeam Leader Safety Assessment, Genentech</p>
<p>15.10 Circulating Tumor Cell (CTC) Analysis in Preclinical Models of Cancer Metastasis Alison Allan, Associate Professor, Departments of Anatomy & Cell Biology & Oncology Schulich School of Medicine and Dentistry, Western University – In collaboration with Angle</p>	<p>14.55 Characterization & Application of the Triple Immunodeficient R2G2 (Rag2/Il2rg Double Knockout) Mouse Lee Coney, Chief Scientific Officer, Biologics, Envigo</p>

15.25 Networking & Afternoon Refreshments

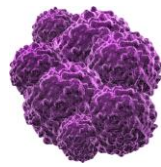
Next Generation Model Development: Harnessing CRISPR Precision Gene Editing

15.50 CRISPR Genome Editing & Mouse Models of Cancer

Sidi Chen, Assistant Professor, Genetics, Yale University

16.20 Combining CRISPR/Cas9 Gene Targeting & Single-Copy Somatic Transgenesis for Preclinical Brain Tumor Research

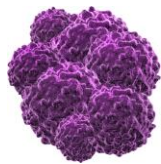
Joshua Breunig, Assistant Professor, Board of Governors Regenerative Medicine Institute, Department of Biomedical Sciences, Cedars-Sinai Medical Center



16.50 Exploring Tumor Initiation & Progression of Colorectal Cancer Using Flexible Genetic Models
Luke Dow, Assistant Professor of Biochemistry in Medicine, Weill Cornell Medicine

17.20 Chair's Closing Remarks
Barbara Joyce-Shaikh, Associate Principal Scientist, Immunoncology, Merck Research Laboratories

17.25 Close of the 5th Annual Tumor Models Boston 2017



BOSTON 2017 TUMOR MODELS

Harnessing Clinical Insights to Improve Preclinical & Translational Outcomes

Lead Partner



CrownBio
CONNECTING SCIENCE TO PATIENTS

Expertise Partners



Program Partners



Spotlight Partners

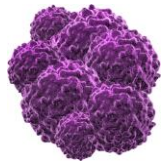


ANGLE



Exhibitors





BOSTON 2017
TUMOR MODELS

Harnessing Clinical Insights to Improve Preclinical & Translational Outcomes